



25 St. Mary Avenue  
Wallington, SM6 7JH  
Guide price £550,000



# 25 St. Mary Avenue

Wallington, SM6 7JH

Cromwells Wallington are delighted to offer this delightful semi-detached house with a perfect blend of comfort and potential. Built in 1930, the property spans an impressive 883 square feet and features two inviting reception rooms, ideal for both relaxation and entertaining. The spacious dining area provides a wonderful setting for family meals and gatherings.

This home boasts three well-proportioned bedrooms, making it an excellent choice for families or those seeking extra space. The bathroom is conveniently located, ensuring ease of access for all residents. One of the standout features of this property is the pretty rear garden, a tranquil oasis perfect for enjoying sunny afternoons or hosting barbecues with friends.

For those with vehicles, the property offers off-street parking for two vehicles, a valuable asset in this desirable area. Additionally, there is scope to extend the property, subject to planning permission, allowing you to tailor the home to your specific needs and preferences.

With no onward chain, this residence is ready for you to move in and make it your own. Whether you are a first-time buyer or looking to settle into a family home, this property on St. Mary Avenue presents an excellent opportunity to create lasting memories in a lovely community. Don't miss your chance to view this charming house and envision the possibilities it holds.

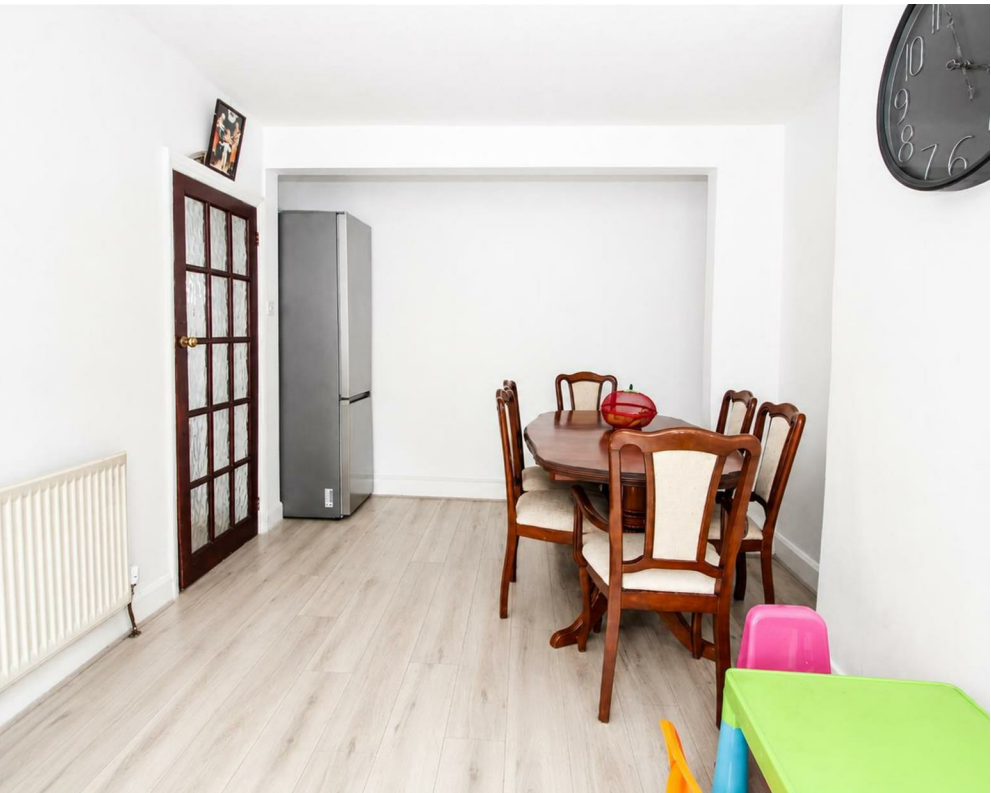
### Accommodation

**Entrance Hall**  
Laminate flooring, double glazed window to front aspect, radiator, under stairs storage cupboards.

**Living room**  
Laminate flooring, radiator, double glazed window to front aspect.

**Dining room**  
Laminate flooring, radiator, double glazed sliding patio door doors leading out to garden.

**Kitchen**  
Range of modern fitted kitchen units and drawers, laminate worktop, inset stainless steel sink with chrome mixer tap, space for cooker, wall mounted boiler, tiled splashback, laminate flooring, double glazed window to side aspect, double glazed door to rear garden.





Stairs to 1st floor landing  
Double glazed window to side aspect, laminate flooring.

Bedroom One  
Laminate flooring, radiator, double glazed window to front aspect.

Bedroom Two  
Built in cupboard, radiator, double glazed window to rear aspect.

Bedroom Three  
Laminate flooring, radiator, double glazed window to front aspect.

Bathroom  
Three-piece suite comprising of corner shower cubicle with sliding door, thermostatic shower, vanity wash and basin with chrome mix tap and storage below, enclosed WC, tiled flooring, part tiled walls, double glazed obscure window to rear aspect.

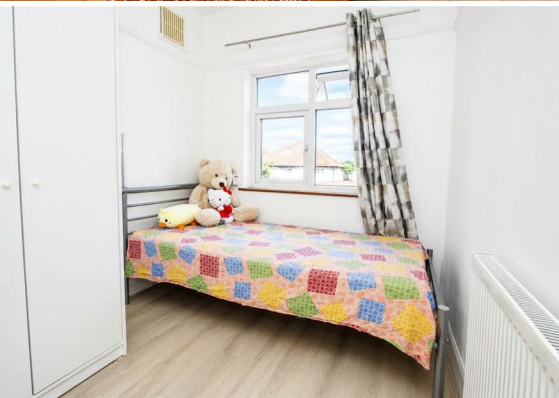
Outside  
Paved driveway to the front providing offstreet parking, gate for side access.

Rear Garden  
Well maintained garden with paved patio, lawn area, raised borders, pond, greenhouse, shed, side access.

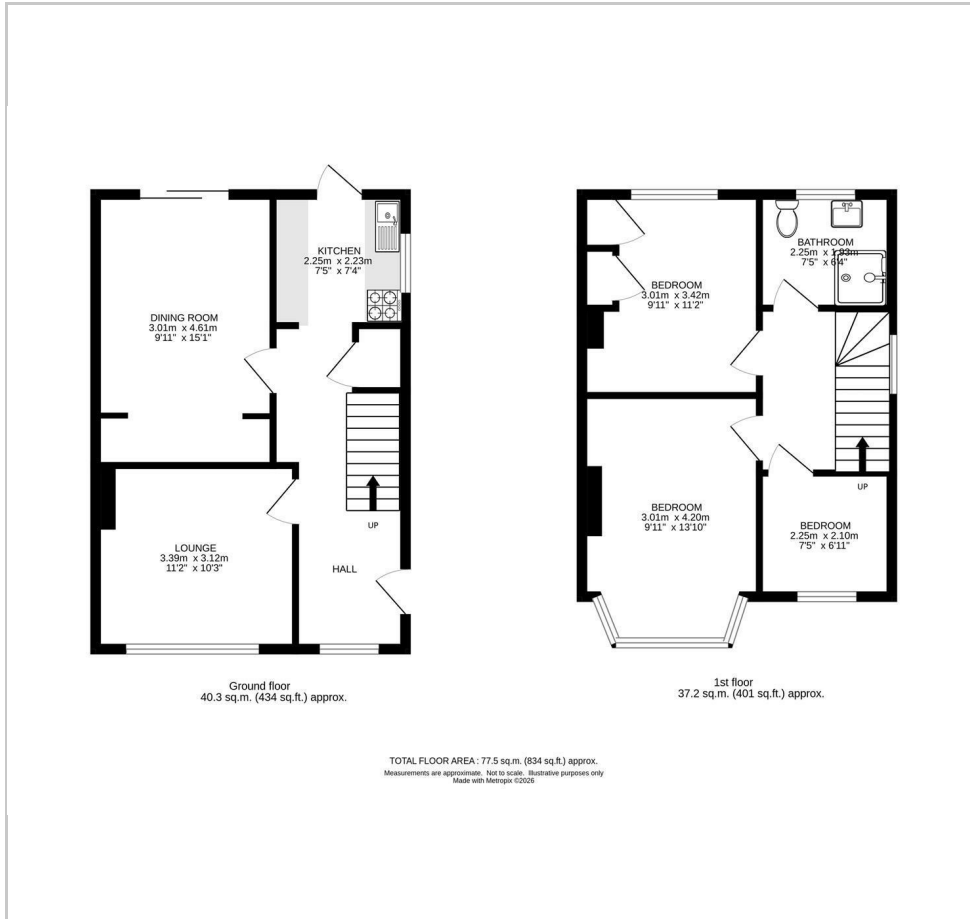
EPC AND FLOOR PLAN COMING SOON....

#### BUYER'S INFORMATION

Under UK law, estate agents are legally required to conduct Anti-Money Laundering (AML) checks on buyers and sellers to comply with regulations. These checks are mandatory, and estate agents can face penalties if they fail to perform them. We use the services of a third party to help conduct these checks thoroughly. As such there is a charge of £36 including vat, per person. Please note, we are unable to issue a memorandum of sale until these checks are complete



## Floor Plan



## Additional Information

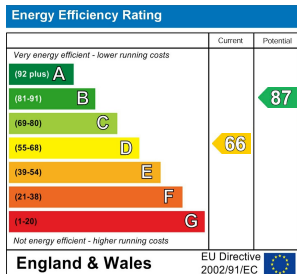
Owners selling with no onward chain, relocating

Boiler in kitchen

Owner lived there 3.5 years

Redecorated throughout

Change front garden to off street parking



## Viewing

Please contact our Cromwells Office on 0208 647 4422 if you wish to arrange a viewing appointment for this property or require further information.

The information provided within these property details has been supplied by the vendor and is intended as a general guide only. Whilst we make every effort to ensure accuracy, we cannot guarantee the completeness or correctness of the information, including but not limited to boundaries, services, installations, or dates of works such as boiler installation. All prospective purchasers should satisfy themselves by inspection, survey, and/or independent enquiries. This information does not form part of any offer or contract, and no reliance should be placed upon it as statements of fact.

These particulars, whilst believed to be accurate are set out as a general outline only for guidance and do not constitute any part of an offer or contract. Intending purchasers should not rely on them as statements of representation of fact, but must satisfy themselves by inspection or otherwise as to their accuracy. No person in this firm's employment has the authority to make or give any representation or warranty in respect of the property.